

Rotary Lobe Pump



ALB SERIES





APPLICATION

Industry Pump:

- Oil
- Wastewater
- Sludge
- Chemicals
- Asphalt
- Excretions
- Paints
- Polymers

Sanitary Pump:

- Dairy
- Bakery
- Meats
- Canned Foods
- Beverages
- Candy
- Flavourings
- Dressings
- Cosmetics
- Drugs
- Syrup
- Cream



Typical Characteristics:

- Front Loading Seals
- Smooth Flow
- Gentle Product Handling
- Dry Running Ability
- Efficient Transport and Dosing
- Handles Low & High Viscosity Products
- Outstanding Operation & Efficiency
- Simple Maintenance
- Hygienic Design
- Low Sound Level



AISI 316 stainless steel cover

- Quick and easy dismantling
- Easy access to seals
- Easy to clean
- Flat reversible cover

AISI 316 stainless steel body

Standard surface finish

Front-loaded mechanical seals

reduced maintenance and downtime

Over-dimensioned front bearings

- heavy loads supported

Robust reliable system

Rear bearings

high speeds supported

Interchangeable drive/driven shafts

Helical gears

- More accurate synchronisation
- Low noise
- Easy adjustment
- Longer lifetime

TRI LOBE Rotor

AISI 316 stainless steel

- Easy to mount
- Accurate positioning with no risk of mechanical error
- Hygienic
- No retention zone

Rotor screws

- 316 stainless steel
- Efficient locking

Splined shaft

- Enhanced distribution of stress
- Reduced wear

Oil level viewing point

Anti-splash casing protection disc

Drainage outlet

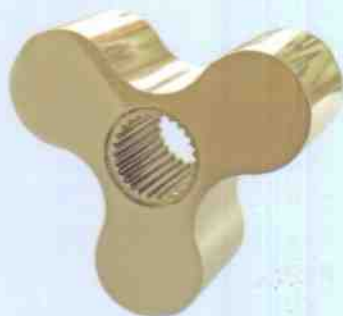
Easy access to seals

All parts in contact with pumped fluid in AISI 316 stainless steel

Designed for easy cleaning with CIP processes

Separately built body and bearing housings

Eliminates risk of accidental media pollution



Tri-Lobe Rotor

- Spline Fitting
- One Way Assembly
- Easy Service & Maintenance
- Quick and Easy Rotor Clearance Adjustment
- O-ring Sealed Tri-Lobe

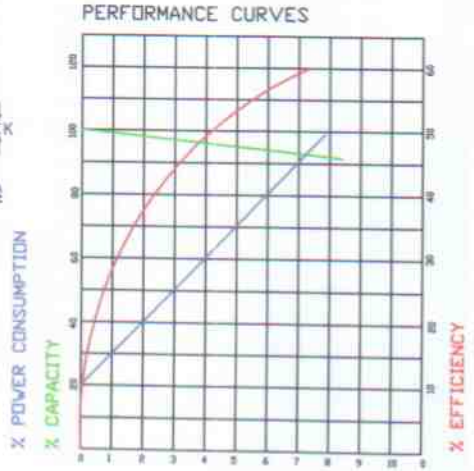
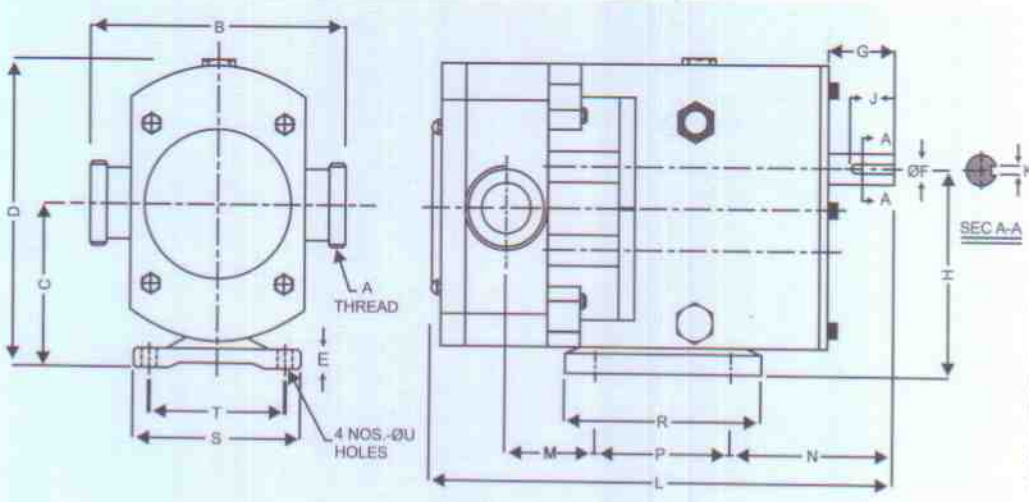
Shaft Seal

- Quick and Easy Mounting
- Easy Service & Quick Maintenance
- External Balance type Mech. Seal

CAPACITY CHART

Pump Model	Port Size Standard	Displacement @100rpm		Max. speed (RPM)	Pressure (Kgf/cm ²)	Weight (Kg)	
		LPM	US. GPM			Horizontal Porting	Vertical Porting
ALB-100S	1"	5	1.4	1000	7	15	16
ALB-100L	1"	8	2.25	1000	7	17	18
ALB-150S	1 1/2"	12	3.38	1000	7	28	30
ALB-150L	1 1/2"	18	4.78	1000	7	30	31
ALB-200S	2"	26	7.03	1000	7	52	55
ALB-200L	2"	38	10.15	1000	7	55	58
ALB-250S	2 1/2"	55	14.64	1000	7	104	110
ALB-250L	2 1/2"	79	20.87	1000	7	109	115
ALB-300S	3"	116	30.65	600	7	150	150
ALB-300L	3"	175	44.39	600	7	158	158
ALB-400S	4"	261	68.70	500	7	258	258
ALB-400L	4"	354	93.26	500	7	264	264

SR. NO	PARTS	MOC
1	Pump Chamber	SS-316
2	Tri-Lobe-Rotor	SS-316
3	Top Cover	SS-316
4	Shaft	SS-316
5	Shaft Seal	Mech. Seal
6	Gear	EN-24
7	Casing	CI
8	Back Cover	CI
9	Bearing Spaler	CI
10	Bearing	SKF



DIMENSIONS

Model	A	B	C	D	E	F	G	H	J	K	L	M	N	P	R	S	T	U
ALB-100S/L	1"	140	90	175	11	16	37	113	30	5	270/278	43/49	124	70	140	100	80	12
ALB-150S/L	1 1/2"	180	115	220	12	22	45	145	35	6	327/338	50/70	138	100	152	125	100	12
ALB-200S/L	2"	216	137	270	18	28	58	175	45	8	445/467	83/88	176	125	180	154	125	14
ALB-250S/L	2 1/2"	280	163	315	18	38	75	211	63	10	455/473	93/103	163	150	200	184	150	14
ALB-300S/L	3"	315	214	405	30	45	110	274	75	14	510/530	88/108	145	210	250	240	210	14
ALB-400S/L	4"	370	230	435	30	48	110	300	75	14	600/620	100/123	172	230	272	240	200	16